

Camlock Type C

Female Coupler with Hose Shank

Material: **SS316**

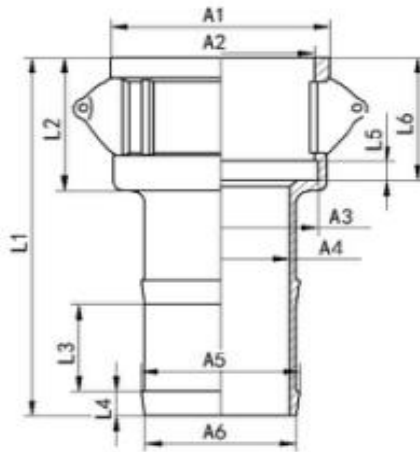
Gasket : **NBR, VITON**

Thread: **NPT, BSP**

Application: **Water, Oil, Chemical etc**

Standard: **A-A59326 (MIL-C-27487)**

Certificate: **CE, ISO**



Dimension

Size(mm)	1/2"	3/4"	1"	1-1/4"	1-1/2"	2"	2-1/2"	3"	4"
L1	71	81	95	102	110	133	133	150	168
L2	27	30	36	41	44	48.5	52.5	52.5	52.5
L3	14	16	18	21	21	32.5	28	34	45
L4	7	9	9	9	9	9.5	10	13	13
L5	4.5	6.35	6.5	7.14	7.14	7.14	7.14	7.14	7.14
L6	25.5	27	33	38	41	45	49	49	48
A1	33.5	40.5	46.5	55	63.5	73.5	88	104.5	134.5
A2	24.5	32.7	37.8	46	54	64	76.8	92.2	120.5
A3	26	36.12	38.5	50.8	57.2	66	78	96	124
A4	9	15.5	20	27	34	46	60	70	92
A5	14	20	27	33	40.5	53.5	65	78	103
A6	13	19	25	31.5	38	51	67.5	76	99
WP (PSI)	150	250	250	250	250	250	225	200	100

Camlock Type D

Female Coupler with Hose Shank

Material: **SS316**

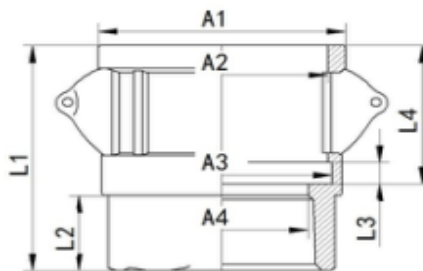
Gasket : **NBR, VITON**

Thread: **NPT, BSP**

Application: **Water, Oil, Chemical etc**

Standard: **A-A59326 (MIL-C-27487)**

Certificate: **CE, ISO**



Dimension

Size(mm)	1/2"	3/4"	1"	1-1/4"	1-1/2"	2"	2-1/2"	3"	4"
L1	43.5	45	54.5	60.5	65	73	80	83	87
L2	14.5	14.5	18	20	21	24	27	30	34
L3	4.5	6.35	6.5	7.14	7.14	7.14	7.14	7.14	7.14
L4	25.5	27	33	38	41	45	49	49	48
A1	33.5	40.5	46.5	55	63.5	73.5	88	104.5	134.5
A2	24.5	32.7	37.8	46	54	64	76.8	92.2	120.5
A3	26	36.12	38.5	50.8	57.2	66	78	96	124
A4	14	20	25	35	40	51	61.5	76.5	102
WP (PSI)	150	250	250	250	250	250	225	200	100